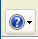


Rolling back Internet Explorer 10 to a Previous Version

How Do I Know if I Have Internet Explorer Version 10?

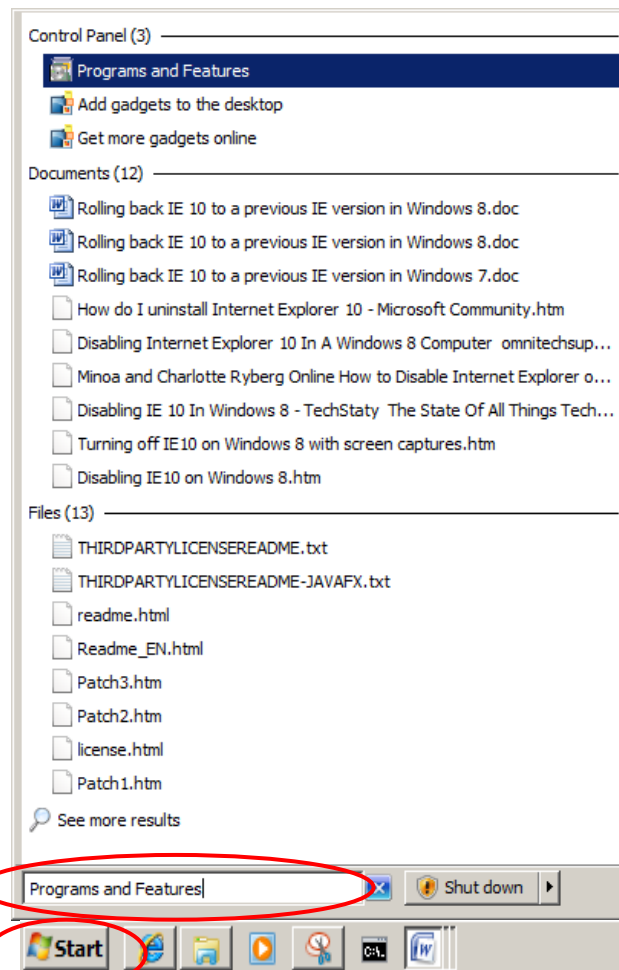
*Open Internet Explorer. In your browser: Click **Alt+H** (or click the **Help** icon ) and select **About Internet Explorer**.*

The information in the Version section is the version of your browser.

FMH's Meditech 6.1 access doesn't work with Internet Explorer 10

Internet Explorer 10 upgrades have automatically been applied to many Windows 7 computers. In order to use FMH's Meditech 6.1 system from an office or home PC, you may need to downgrade your Internet Explorer to an earlier version.

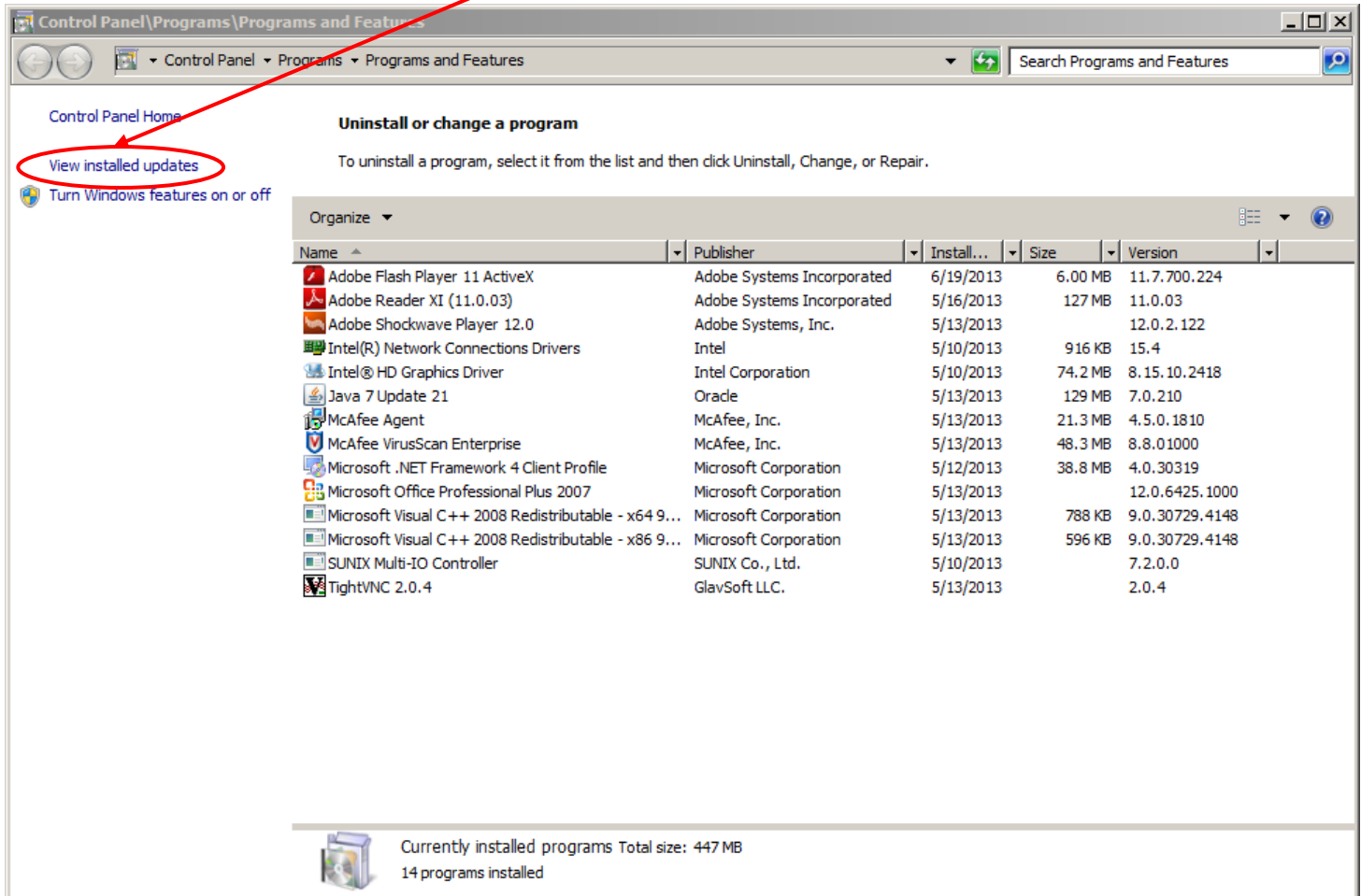
To uninstall IE 10 :



Close all Internet Explorer windows. Click **Start** button in lower left part of your computer screen. In the search box, type **Programs and Features** then hit **Enter** . This will bring up the Programs and Features window, shown below. **3**

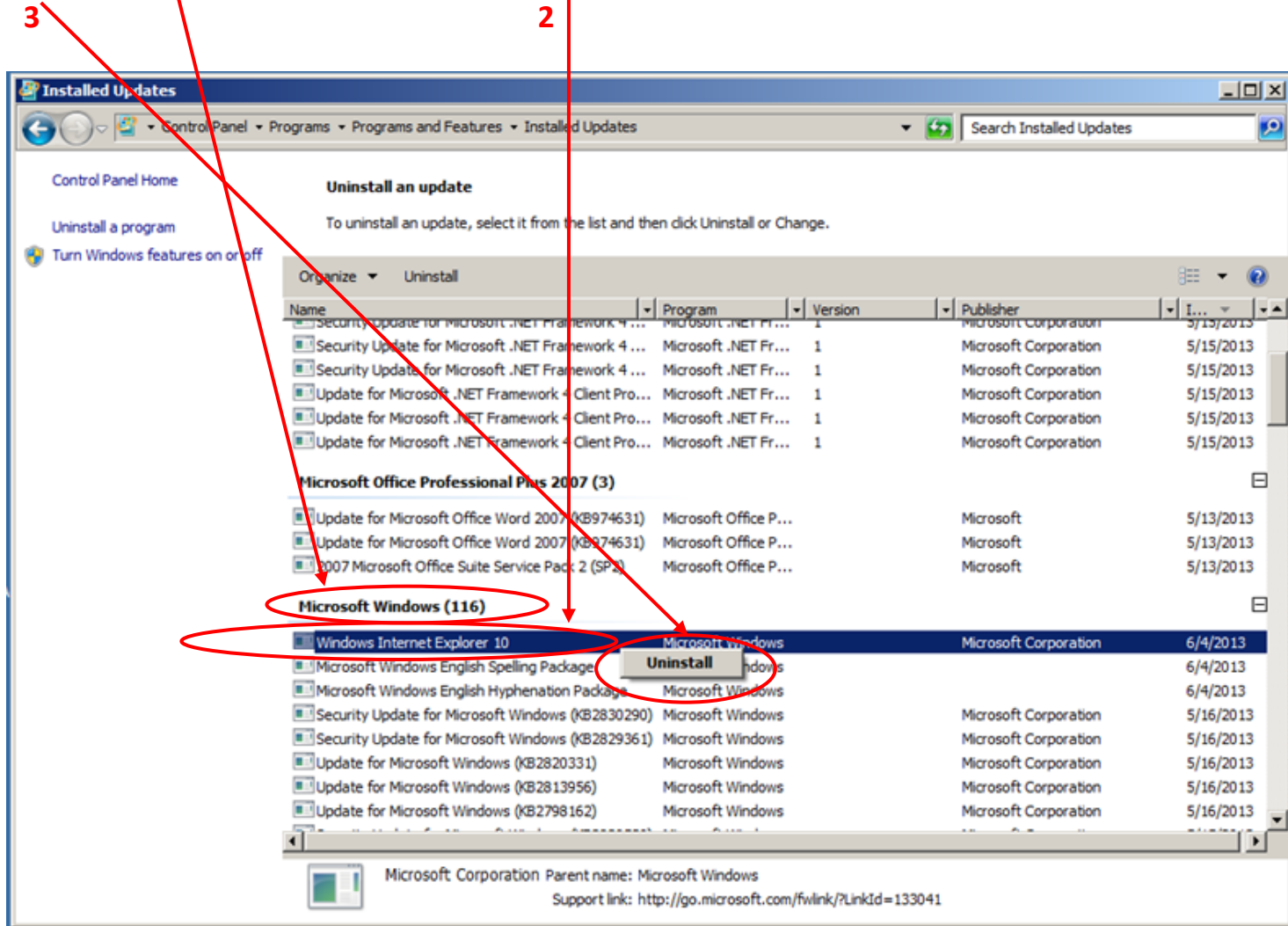
Rolling back Internet Explorer 10 to a Previous Version

In the Programs and Features window that comes up, click **View installed updates**. This will bring up the Installed Updates window, shown in the second window below.



Rolling back Internet Explorer 10 to a Previous Version

In the Installed Updates window that comes up, using the scroll bar on the right side, scroll down to **Microsoft Windows** heading and find **Windows Internet Explorer 10**. Right click on it then click **Uninstall**. 1

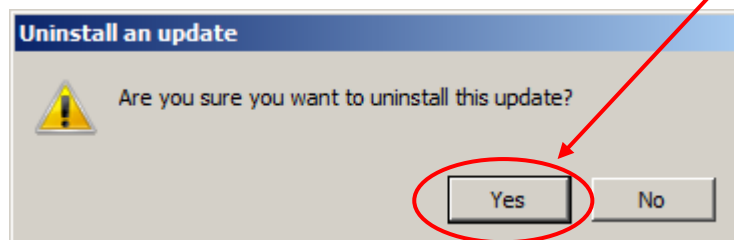


After you click Uninstall above, a confirmation message will come up, as shown below. Verify that you had indeed selected Windows Internet Explorer 10 in the Installed Updates window (you can move the confirmation message window, if it's blocking the Installed Updates window, by left clicking on its banner and dragging it).

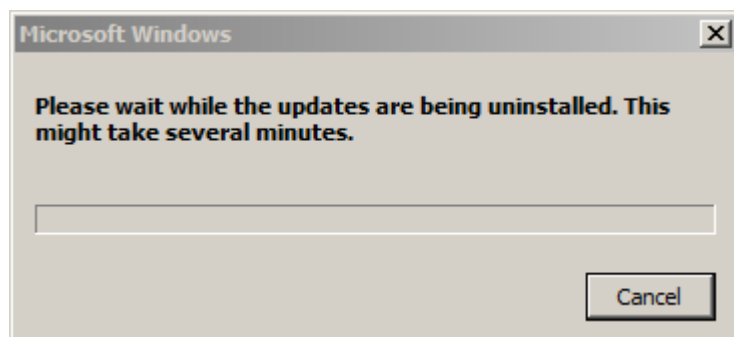
Rolling back Internet Explorer 10 to a Previous Version

If you had correctly selected Windows Internet Explorer 10, click **Yes** in the window below to confirm.

If you had accidentally selected something else, click **No** in the confirmation window, select Windows Internet Explorer 10 in the Installed Updates window, and then click Yes in the confirmation window when it comes up again.



Once the uninstall starts, the following message will come up and stay up until the uninstall completes.



After the uninstall completes, the following message will come up, directing you to restart your computer now or later. The roll-back from IE 10 to the previous IE version will not be complete until after restart. Once restarted, you will have your previous IE version back; you will not need to reinstall your previous IE version.

